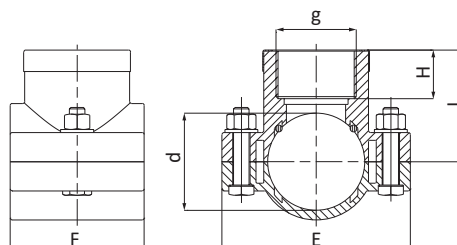


CODE 1026



Pres a staffa con anello di rinforzo - Clamp saddle with reinforcing ring - Collier de prise avec bague de renforcement
 Collarín de toma con anillo de refuerzo - Anbohrschellen mit Verstärkung - Зажимное седло с металлическим кольцом



CODE	DIM dxg [mmxin]	L [mm]	H [mm]	E [mm]	F [mm]	NF [mm]	PN [bar]	PACK RIF. 5
1026025002001	25x1/2"	38	20	76	49	2	10	180
1026025003001	25x3/4"	38	21	76	49	2	10	180
1026032002001	32x1/2"	41	17	81	56	2	10	140
1026032003001	32x3/4"	41	21	81	56	2	10	140
1026032004001	32x1"	44	23	81	56	2	10	140
1026040002001	40x1/2"	41	17	81	60	2	10	110
1026040003001	40x3/4"	46	18	81	60	2	10	110
1026040004001	40x1"	46	23	81	60	2	10	110
1026050002001	50x1/2"	50	17	98	69	4	10	80
1026050003001	50x3/4"	50	18	98	69	4	10	80
1026050004001	50x1"	52	20	98	69	4	10	80
1026050005001	50x1"1/4	57	25	98	69	4	10	80
1026063002001	63x1/2"	55	16	105	79	4	10	55
1026063003001	63x3/4"	55	18	105	79	4	10	55
1026063004001	63x1"	59	20	105	79	4	10	55
1026063005001	63x1"1/4	63	25	105	79	4	10	55
1026063006001	63x1"1/2	63	28	105	79	4	10	55
1026075002001	75x1/2"	62	17	120	90	4	10	40
1026075003001	75x3/4"	62	18	120	90	4	10	40
1026075004001	75x1"	65	21	120	90	4	10	40
1026075005001	75x1"1/4	68	24	120	90	4	10	40
1026075006001	75x1"1/2	68	23	120	90	4	10	40
1026075007001	75x2"	72	27	120	90	4	10	40
1026090002001	90x1/2"	70	17	135	90	4	10	30
1026090003001	90x3/4"	70	19	135	90	4	10	30
1026090004001	90x1"	72	21	135	90	4	10	30
1026090005001	90x1"1/4	76	24	135	90	4	10	30

>>>



>>>

CODE	DIM dxg [mmxin]	L [mm]	H [mm]	E [mm]	F [mm]	NF [mm]	PN [bar]	PACK RIF. 5
1026090006001	90x1"1/2	76	24	135	90	4	10	30
1026090007001	90x2"	80	27	135	90	4	10	30
1026110002001	110x1/2"	80	17	168	99	4	10	19
1026110003001	110x3/4"	80	19	168	99	4	10	19
1026110004001	110x1"	84	20	168	99	4	10	19
1026110005001	110x1"1/4	86	23	168	99	4	10	19
1026110006001	110x1"1/2	86	23	168	99	4	10	19
1026110007001	110x2"	90	27	168	99	4	10	19
1026125002001	125x1/2"	108	25	190	106	6	10	12
1026125003001	125x3/4"	108	26	190	106	6	10	12
1026125004001	125x1"	109	26	190	106	6	10	12
1026125005001	125x1"1/4	109	25	190	106	6	10	12
1026125006001	125x1"1/2	113	28	190	106	6	10	12
1026125007001	125x2"	113	30	190	106	6	10	12
1026125009001	125x3"	113	35	190	106	6	10	12
1026160003001	*160x3/4"	108	19	215	175	6	16	13
1026160004001	*160x1"	110	21	215	175	6	16	13
1026160005001	160x1"1/4	113	24	215	175	6	10	13
1026160006001	160x1"1/2	115	26	215	175	6	10	13
1026160007001	160x2"	117	30	215	175	6	10	13
1026160008001	160x2"1/2	125	32	215	175	6	10	10
1026160009001	160x3"	134	35	215	175	6	10	9
1026160010001	160x4"	135	40	215	175	6	10	9
1026200003001	*200x3/4"	128	23	262	175	6	16	11
1026200004001	*200x1"	130	23	262	175	6	16	11
1026200005001	200x1"1/4	133	23	262	175	6	10	11
1026200006001	200x1"1/2	133	23	262	175	6	10	11
1026200007001	200x2"	135	30	262	175	6	10	11
1026200008001	200x2"1/2	150	32	262	175	6	10	10
1026200009001	200x3"	152	35	262	175	6	10	9
1026200010001	200x4"	155	42	262	175	6	10	8

* PN 16 bar