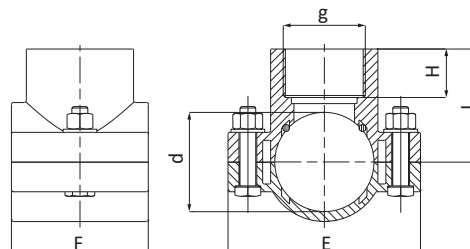


CODE 1019



Presa a staffa - Clamp saddle - Collier de prise - Collarín de toma - Anbohrschellen - Седло зажимное



CODE	DIM dxg [mmxin]	L [mm]	H [mm]	E [mm]	F [mm]	NF [mm]	PN [bar]	PACK RIF. 5
1019025002001	25x1/2"	38	20	76	49	2	10	180
1019025003001	25x3/4"	38	21	76	49	2	10	180
1019032002001	32x1/2"	41	17	81	56	2	10	140
1019032003001	32x3/4"	41	21	81	56	2	10	140
1019032004001	32x1"	44	23	81	56	2	10	140
1019040002001	40x1/2"	41	17	81	60	2	10	110
1019040003001	40x3/4"	46	18	81	60	2	10	110
1019040004001	40x1"	46	23	81	60	2	10	110
1019050002001	50x1/2"	50	17	98	69	4	10	80
1019050003001	50x3/4"	50	18	98	69	4	10	80
1019050004001	50x1"	52	20	98	69	4	10	80
1019050005001	50x1"1/4	57	25	98	69	4	10	80
1019063002001	63x1/2"	55	16	105	79	4	10	55
1019063003001	63x3/4"	55	18	105	79	4	10	55
1019063004001	63x1"	59	20	105	79	4	10	55
1019063005001	63x1"1/4	63	25	105	79	4	10	55
1019063006001	63x1"1/2	63	28	105	79	4	10	55
1019075002001	75x1/2"	62	17	120	90	4	10	40
1019075003001	75x3/4"	62	18	120	90	4	10	40
1019075004001	75x1"	65	21	120	90	4	10	40
1019075005001	75x1"1/4	68	24	120	90	4	10	40
1019075006001	75x1"1/2	68	23	120	90	4	10	40
1019075007001	75x2"	72	27	120	90	4	10	40
1019090002001	90x1/2"	70	17	135	90	4	10	30
1019090003001	90x3/4"	70	19	135	90	4	10	30
1019090004001	90x1"	72	21	135	90	4	10	30
1019090005001	90x1"1/4	76	24	135	90	4	10	30



>>>

CODE	DIM dxg [mmxin]	L [mm]	H [mm]	E [mm]	F [mm]	NF [mm]	PN [bar]	PACK RIF. 5
1019090006001	90x1"1/2	76	24	135	90	4	10	30
1019090007001	90x2"	80	27	135	90	4	10	30
1019110002001	110x1/2"	80	17	168	99	4	10	19
1019110003001	110x3/4"	80	19	168	99	4	10	19
1019110004001	110x1"	84	20	168	99	4	10	19
1019110005001	110x1"1/4	86	23	168	99	4	10	19
1019110006001	110x1"1/2	86	23	168	99	4	10	19
1019110007001	110x2"	90	27	168	99	4	10	19
1019125002001	125x1/2"	108	25	190	106	6	10	12
1019125003001	125x3/4"	108	26	190	106	6	10	12
1019125004001	125x1"	109	26	190	106	6	10	12
1019125005001	125x1"1/4	109	25	190	106	6	10	12
1019125006001	125x1"1/2	113	28	190	106	6	10	12
1019125007001	125x2"	113	30	190	106	6	10	12
1019160003001	*160x3/4"	108	19	215	175	6	6	13
1019160004001	*160x1"	110	21	215	175	6	6	13
1019160005001	*160x1"1/4	113	24	215	175	6	6	13
1019160006001	*160x1"1/2	115	26	215	175	6	6	13
1019160007001	*160x2"	117	30	215	175	6	6	13
1019160008001	*160x2"1/2	125	32	215	175	6	6	10
1019160009001	*160x3"	134	35	215	175	6	6	9
1019160010001	*160x4"	135	40	215	175	6	6	9
1019200003001	*200x3/4"	128	23	262	175	6	6	11
1019200004001	*200x1"	130	23	262	175	6	6	11
1019200005001	*200x1"1/4	133	23	262	175	6	6	11
1019200006001	*200x1"1/2	133	23	262	175	6	6	11
1019200007001	*200x2"	135	30	262	175	6	6	11
1019200008001	*200x2"1/2	150	32	262	175	6	6	10
1019200009001	*200x3"	152	35	262	175	6	6	9
1019200010001	*200x4"	155	42	262	175	6	6	8

* PN 6 bar