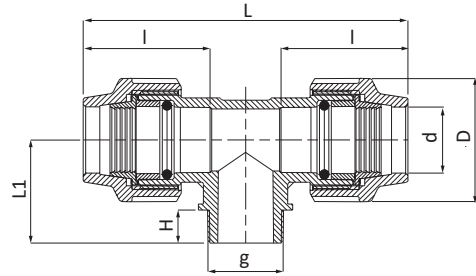


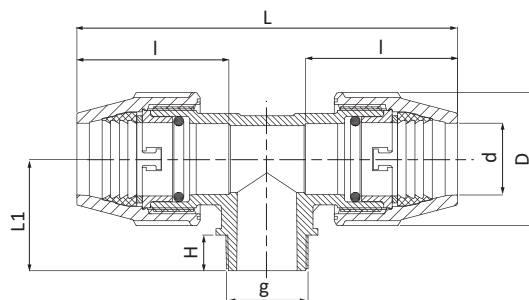
CODE 1010



Ti a 90° con derivazione maschio - 90° Tee with threaded male take off - Té à 90° avec dérivation mâle
 Te 90° con derivación rosca macho - T-Stück 90° mit Aussengewinde am Mittelstutzen - Тройник 90° с наружной резьбой



CODE	DIM dxgxd [mmxin]	D [mm]	L [mm]	I [mm]	H [mm]	L1 [mm]	PN [bar]	PACK RIF. 2	PACK RIF. 5	PACK RIF. 6
1010016002001	16x1/2"x16	42	125	50	18	36	16	50	-	-
1010016003001	16x3/4"x16	42	125	50	18	36	16	50	-	-
1010020002001	20x1/2"x20	46	139	56	16	35	16	40	180	-
1010020003001	20x3/4"x20	46	139	56	17	36	16	40	180	-
1010025002001	25x1/2"x25	55	160	63	16	35	16	25	110	-
1010025003001	25x3/4"x25	55	160	63	17	36	16	25	110	-
1010025004001	25x1"x25	55	160	63	19	38	16	25	100	-
1010032002001	32x1/2"x32	63	183	68	16	35	16	15	65	-
1010032003001	32x3/4"x32	63	183	68	17	36	16	15	65	-
1010032004001	32x1"x32	63	183	68	20	39	16	15	65	-
1010032005001	32x1"1/4x32	63	183	68	22	41	16	15	60	-
1010040004001	40x1"x40	80	218	81	20	44	16	8	35	-
1010040005001	40x1"1/4x40	80	218	81	22	44	16	8	35	-
1010040006001	40x1"1/2x40	80	218	81	22	44	16	8	35	-



>>>

CODE	DIM dxgxd [mmxin]	D [mm]	L [mm]	I [mm]	H [mm]	L1 [mm]	PN [bar]	PACK RIF. 2	PACK RIF. 5	PACK RIF. 6
1010051005001	50x1"1/4x50	96	264	103	24	49	16	-	17	-
1010051006001	50x1"1/2x50	96	264	103	25	50	16	-	17	-
1010051007001	50x2"x50	96	264	103	29	54	16	-	17	-
1010064006001	63x1"1/2x63	115	335	130	25	60	16	-	10	-
1010064007001	63x2"x63	115	335	130	27	62	16	-	10	-
1010064008001	63x2"1/2x63	115	335	130	28	63	16	-	10	-
1010076008001	75x2"1/2x75	129	365	137	32	70	16	-	6	-
1010076009001	75x3"x75	129	365	137	35	73	16	-	6	-
1010091009001	90x3"x90	155	408	155	35	73	16	-	4	-
1010091010001	90x4"x90	155	408	155	41	81	16	-	4	-
1010111010001	110x4"x110	183	538	211	42	98	16	-	-	2